



HIGH-END BEARING MANUFACTURERS

高端轴承制造商

百沃精工
NBVO
SEIKO BEARING

NINGBO NBVO SEIKO BEARING CO.,LTD.

宁波百沃精工轴承有限公司

ADD: Zhenhai · Ningbo · China

地址: 中国 · 宁波 · 镇海

TEL: 0574-86667311

电话: 0574-86667311

FAX: 0574-86667300

传真: 0574-86667300

Http: //www.nbvo.cn

网址: www.nbvo.cn

NINGBO

NBVO SEIKO BEARING CO.,LTD.

宁波百沃精工轴承有限公司



About NBVO

关于百沃

Located in the east coast of China, Ningbo NBVO Seiko Bearing Co., Ltd is a modern Taiwanese investment enterprise specializing in high precision, low-noise, long-life bearing. Combined research and development, manufacturing, trading and service, NBVO bearings are widely applied in the field of auto, medical devices, food, chemical industry and various types of home appliances.

We have our own Specialized R&D and Testing laboratory, and successfully passed IATF: 2016 16949 and ISO 9001: 2015 quality management system. Product accuracy and life have reached world level while supplying to America, Japan, European countries and so on.

坐落于东海之滨的宁波百沃精工轴承有限公司，是一家专业生产高精度、低噪音、长寿命轴承的现代化台资企业，集研发、生产、贸易、服务于一体，产品广泛应用于汽车、医疗、食品、化工及各类家用电器等行业。

公司拥有专门的研发及检测实验室，并通过 IATF 16949: 2016 和 ISO9001: 2015 质量管理体系认证，产品的精度和使用寿命均达到世界水平，产品远销美国、日本、欧盟等国家。

Corporate Culture

企业文化

Vision 企业愿景

To become a modern and competitive technological century-enterprise on the economical way with quality fist.
共同努力将企业建成现代化的具有较强竞争力的质量效益型的科技型百年企业

Mission 企业使命

- Be beneficial for staff 为员工谋求福利
- Be valuable for customer 为客户创造价值
- Be profitable for enterprise 为企业赢取利润
- Be responsible for society 为社会承担责任

Values 核心价值观

- Devotion, Innovation 敬业、创新
- Unity, Responsibility 团结、责任
- Studios, Gratitude 学习、感恩

A business perspective on how to lok at customer needs, determine how far the market can go, how high; with the idea of how to meet customer needs, the decision to be able to walk in the hearts of customers. How deep to go.

一个企业用怎样的视角看待客户需求，决定其在市场上能走多远，站多高；用怎样的理念满足客户需求，决定其在客户心中能走多顺、走多深。

Qualifiucation

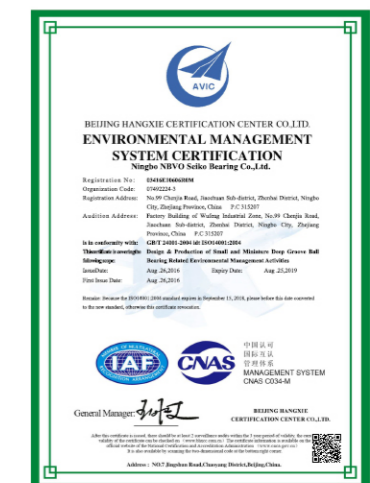
企业资质



IATF 16949 : 2016 Certificate Of Quality Management System



ISO 9001 : 2015 Certificate Of Quality Management System



ISO 14001 : 2004 Certificate Of Environmental Management System



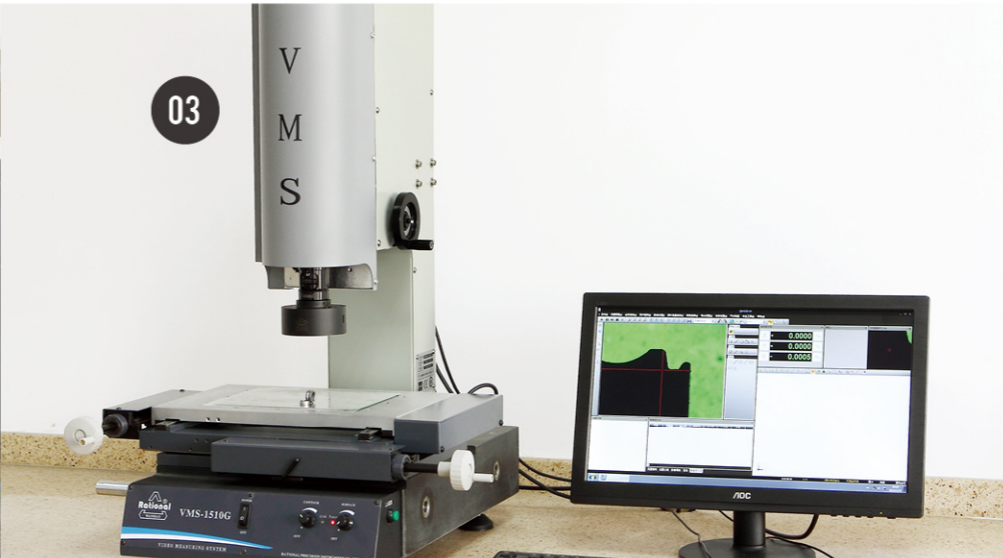
IATF 16949 : 2016 质量管理体系证书



ISO 9001 : 2015 质量管理体系证书



ISO 14001 : 2004 环境管理体系证书





Car 汽车



Household Appliances
家用电器

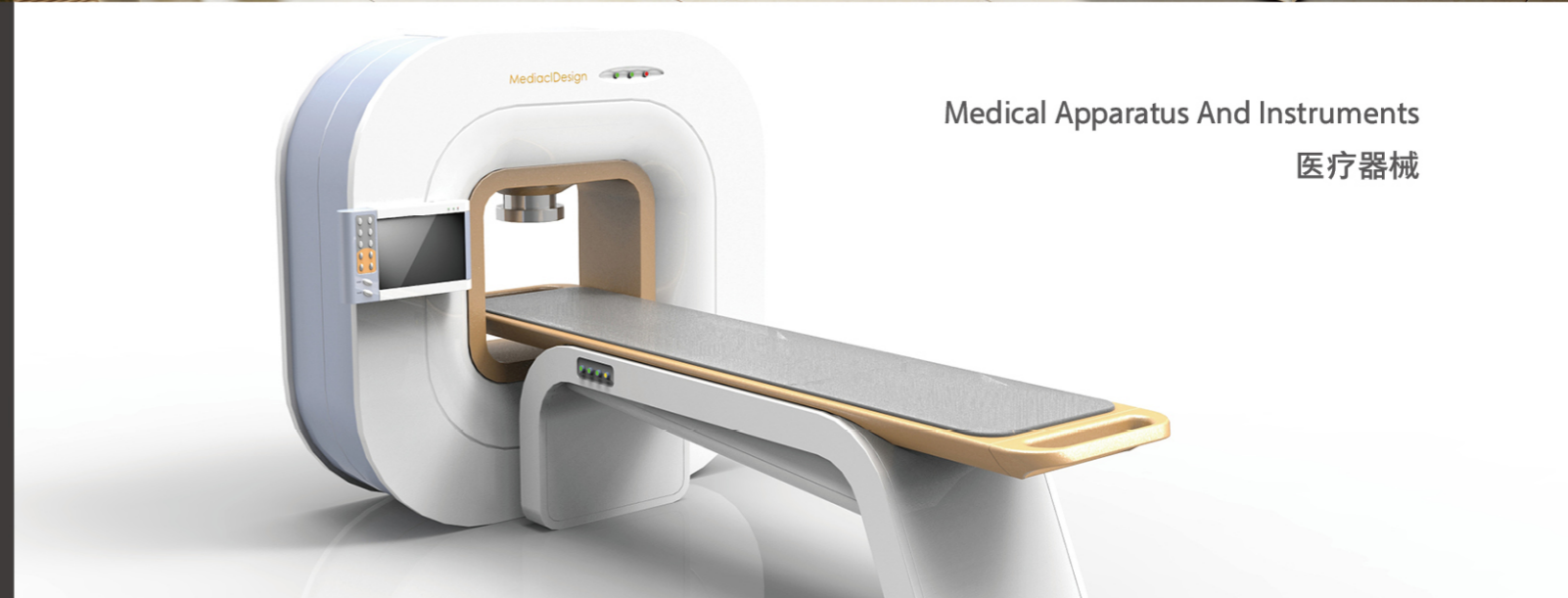


Fishing Tackle
渔具

Application Field 应用领域

NBVO specializes in R&D and manufacturing of precision bearings, rich products can be used in different fields, satisfies the customer the different demand, long-term for the market to provide precision bearings, the accumulation of years of industry has made our company become the optimization of product structure, stable, smooth channels of information, open, won the recognition of the broad masses of customers.

百沃专注于精密轴承的研发和制造，丰富的产品可运用在不同领域，满足不同客户的需求，长期为市场提供精密轴承，多年的行业积累，已使我公司成为产品结构优化、稳定、信息渠道畅通、开放、深得广大客户的认可。



Medical Apparatus And Instruments
医疗器械



Finance
金融



Chemical Machinery
化工机械



Food Machinery
食品机械

Technical Information

技术资料

Rolling Bearing Structure And Feature 滚动轴承的构造

Rolling bearing normally comprise bearing rings(inner ring and outer ring),rolling elements and a cage.Rolling elements are arranged between inner and outer rings, and a cage to make the rolling elements in correct relativer position, so they do not contact each other.With this structure, a rolling motion is operation interval.

The load of bearing is supported by the contact surface or point of rolling elements and rings rolling, And another part cage is not direct brace the bearing ,besides interval sustain the right position of the rolling elements, also prevent dropping out during installtion.

滚动轴承一般是由套圈（内圈和外圈），滚动体（球）及保持架所构成。即在相对两个套圈之间配置几个滚动体，并利用保持架使它们不互相接触而保持一定间隔作滚动运动的构造。滚动体与套圈是以其滚道面的接触面（点）支撑轴承所承受的负荷。另一构成零件保持架并不直接承受轴承负荷，它除了使滚动体等间隔地维持正确位置外，同时也防止安装轴承时滚动体脱落。

Bearing Materials 轴承材料

High-carbon chromium bearing steel is the perfect material for bearing, through the proper method of heat treatment and cold treatment, the steel is high hardness anti-fatigue, anti-grinded and dimension stability etc.

轴承钢：高碳铬轴承钢是制造滚动轴承的理想材料，通过适当的热处理和冷冻处理，它具有高硬度、抗疲劳、耐磨损以及良好的尺寸稳定性等特性。

High performance stainless steel bearings in clean corrosion based can have comparable with that of high carbon chromium bearing steel of high precision and wear resistance, my company production of stainless steel bearing, The inner & outer ring and the rolling body material of NBVO stainless steel bearing use AISI440C(G102Cr18Mo G95Cr18),after vacuum quenching and tempering treatment ; cage and sealing ring skeleton materials used AISI 304 or AISI 316. precision grade reached level P5, vibration level reached over Z3 group. Material can also be specified according to customer.

不锈钢：高性能的不锈钢轴承在清洁耐腐蚀的基础上可具备与高碳铬轴承钢相媲美的高精度及耐磨性，我公司生产的不锈钢轴承内、外圈及滚动体材料采用 AISI440C(G102Cr18Mo 或 G95Cr18) 经过真空淬火回火处理；保持架及密封圈骨架材料采用 AISI 304 或 AISI 316, 精度等级达到 P5 等级，振动等级达到 Z3 组以上。材料也可根据客户指定。

Common Materials For Stainless Steel 不锈钢常用材料

Part name 部件名称	Material 材料			
Inner /Outer Ring 内、外套圈	AISI440 9Cr18	AISI440C 9Cr18Mo	AISI304 0Cr18Ni9	AISI316 0Cr17Ni12Mo2
Ball 钢球	AISI440 9Cr18	AISI440	AISI304	AISI316
Cage/Shield 保持架、防尘盖	AISI304	AISI304	AISI304	AISI304

Stainless steel chemical composition 不锈钢化学成分

不锈钢材料牌号 Stainless steel NO.	C%	Cr%	Si%	Mn%	S%	p%	Mo%	Ni%
AISI440	0.90 ~ 1.00	17 ~ 19	≤ 0.8	≤ 0.8	≤ 0.03	≤ 0.035		
AISI440C	0.95 ~ 1.10	16 ~ 18	≤ 0.8	≤ 0.8	≤ 0.03	≤ 0.035	≤ 0.75	
AISI304	≤ 0.07	17 ~ 19	≤ 1	≤ 2	≤ 0.03	≤ 0.035		8 ~ 11
AISI316	≤ 0.08	16 ~ 18.5	≤ 1	≤ 2	≤ 0.03	≤ 0.035	2 ~ 3	10 ~ 14

Table of stainless steel materials in various countries 各国不锈钢材料对照表

国家 Country	中国 China	美国 U.S.A	日本 Japan	德国 Germany		法国 France
				DIN	W-Nr	
Bearing steel No.	G95Cr18(9Cr18)	AISI440	SUS440	X90CrMoV18	1.4112	Z105CrMo17
	G102Cr18Mo(9Cr18Mo)	AISI440C	SIUS440C	X105CrMo17	1.4125	Z105CrMo17
	0Cr18Ni9	AISI304	SUS304	X5CrNi18-10	1.4301	Z7CN18-09
	0Cr17Ni12Mo2	AISI316	SUS316	X5CrNiMo-17-12-2	1.4401	Z7CND18-12-03

Bearing Tolerance 轴承精度

Bearing tolerance include both dimension tolerance and rotate tolerance.NBVO bearing tolerance adapt:P0、P6、P5、P4、P2 as well as ISO standard. They are comparing as follows:

轴承精度，是指尺寸精度和旋转精度。NBVO 轴承精度等级分别为：P0、P6、P5、P4、P2 等效采用 ISO 标准。不同标准精度等级对比如下：

Comparison of tolerance 精度等级对照

标准代号 standand code	精度等级 tolerance				
GB	P0	P6	P5	P4	P2
ISO	Normal CLASS	CLASS 6	CLASS 5	CLASS 4	CLASS 2
SKF	P0	P6	P5	P4	P2
DIN	P0	P6	P5	P4	P2
JIS	JIS 0	JIS 6	JIS 5	JIS 4	JIS 2
ANSI	ABEC-1	ABEC-3	ABEC-5	ABEC-7	ABEC-9

Allowable Tolerance of Radial Bearing (Inner Ring) 向心轴承公差 (内圈)

Unit: μm

精度等级 Accuracy class	d (mm)		Δ_{dmp}		直径系列 Diameter Series			V_{dmp}	K_{α}	S_d	S_{α}	Δ_{Bs}		V_{Bs}
					V_{dsp}									
	超过 Over	到 To	上偏差 Upper deviation	下偏差 Lower deviation	9	0、1	2、3、4	max	max	max	max	max	上偏差 Upper deviation	下偏差 Lower deviation
P0	0.6	2.5	0	-8	10	8	6	6	10	/	20	0	-40	12
	2.5	10	0	-8	10	8	6	6	10	/	20	0	-120	15
	10	18	0	-8	10	8	6	6	10	/	20	0	-120	20
	18	30	0	-10	13	10	8	8	13	/	24	0	-120	20
P6	0.6	2.5	0	-7	9	7	5	5	5	/	10	0	-40	12
	2.5	10	0	-7	9	7	5	5	6	/	10	0	-120	15
	10	18	0	-7	9	7	5	5	7	/	12	0	-120	20
	18	30	0	-8	10	8	6	6	8	/	12	0	-120	20
P5	0.6	2.5	0	-5	5	4	4	3	4	7	7	0	-40	5
	2.5	10	0	-5	5	4	4	3	4	7	7	0	-40	5
	10	18	0	-5	5	4	4	3	4	7	7	0	-80	5
	18	30	0	-6	6	5	5	3	4	8	8	0	-120	5
P4	0.6	2.5	0	-4	4	3	3	2	2.5	3	3	0	-40	2.5
	2.5	10	0	-4	4	3	3	2	2.5	3	3	0	-40	2.5
	10	18	0	-4	4	3	3	2	2.5	3	3	0	-80	2.5
	18	30	0	-5	5	4	4	2.5	3	4	4	0	-120	2.5
P4	0.6	2.5	0	-6	6	5	5	3	4	4	4	0	-120	3
	2.5	10	0	-6	6	5	5	3	4	4	4	0	-120	3
	10	18	0	-6	6	5	5	3	4	4	4	0	-120	3
	18	30	0	-6	6	5	5	3	4	4	4	0	-120	3

Allowable Tolerance of Radial Bearing (Outer Ring) 向心轴承公差 (外圈)

Unit: μm

精度等级 Accuracy class	D (mm)		Δ_{Dmp}		直径系列 Diameter Series				V_{Dmp}	K_{α}	S_D	S_{α}	Δ_{Cs}		V_{Cs}
					开型轴承 Open bearing		闭型轴承 Capped bearing								
	超过 Over	到 To	上偏差 Upper deviation	下偏差 Lower deviation	9	0、1	2、3、4	0、1、2、3、4	max	max	max	max	上偏差 Upper deviation	下偏差 Lower deviation	max
P0	2.5	6	0	-8	10	8	6	10	6	15	/	/	0	-40	12
	6	18	0	-8	10	8	6	10	6	15	/	/	0	-120	15
	18	30	0	-9	12	9	7	12	7	15	/	/	0	-120	20
	30	50	0	-11	14	11	8	16	8	20	/	/	0	-120	20
P6	2.5	6	0	-7	9	7	5	9	5	8	/	/	0	-40	12
	6	18	0	-7	9	7	5	9	5	8	/	/	0	-120	15
	18	30	0	-8	10	8	6	10	6	9	/	/	0	-120	20
	30	50	0	-9	11	9	7	13	7	10	/	/	0	-120	20
P5	2.5	6	0	-5	5	4	4	4	3	5	8	8	0	-40	5
	6	18	0	-5	5	4	4	4	3	5	8	8	0	-40	5
	18	30	0	-6	6	5	5	5	3	6	8	8	0	-80	5
	30	50	0	-7	7	5	5	5	4	7	8	8	0	-120	5
P4	2.5	6	0	-4	4	3	3	3	2	3	4	5	0	-40	2.5
	6	18	0	-4	4	3	3	3	2	3	4	5	0	-40	2.5
	18	30	0	-5	5	4	4	4	2.5	4	4	5	0	-80	2.5
	30	50	0	-6	6	5	5	5	3	5	4	5	0	-120	2.5

Bearing Clearance 轴承游隙

The radial clearance is divided into 5 groups in accordance with national standard, which is adopted from ISO5753 equivalently. NBVO 深沟球轴承的径向游隙按国家标准 (等效 ISO5753) 分为五组, 径向游隙值见下表

Unit: μm

内径 d (mm) Bore diameter d (mm)		2组 Group 2		0组 Group 0		3组 Group 3		4组 Group 4		5组 Group 5	
超过 over	到 to	最小 min	最大 max	最小 min	最大 max	最小 min	最大 max	最小 min	最大 max	最小 min	最大 max
2.5	6	0	7	2	13	8	23	/	/	/	/
6	10	0	7	2	13	8	23	14	29	20	37
10	18	0	9	3	18	11	25	18	33	25	45

18	24	0	10	5	20	13	28	20	36	20	48
24	30	1	11	5	20	13	28	23	41	30	53
30	40	1	11	6	20	15	33	28	46	40	64
40	50	1	11	6	23	18	36	30	51	45	73
50	65	1	15	10	30	25	51	46	71	65	105

The clearance requirements of bearing can be specified in order. 用户需特殊的径向游隙可在订货提出。

Radial clearance of small and miniature bearing 小型球轴承、微型球轴承的径向游隙

Unit: μm

游隙代号 Clearance Code	MC1		MC2		MC3		MC4		MC5		MC6	
游隙 Clearance	min	max	min	max	min	max	min	max	min	max	min	max
	0	5	3	8	5	10	8	13	13	20	20	28

Radial clearance of motor bearing 电机轴承径向游隙

Unit: μm

内径 (Bore diameter) d(mm)		游隙 (Clearance) CM	
超过 Over	到 To	最小 (Min)	最大 (Max)
10 (包括)	18	4	11
18	30	5	12
30	50	9	17

A Detail List Of The Commonly-Used Lubricating Grease
常用润滑脂的明细表

制造厂 Manufacturer	牌号 Brand	增稠剂 Viscosity	基油 Base oil	滴点 Drop Point °C	稠度 Consistency	使用温度范围 Operating Temperature range °C	选用原则 Selection Criteria	NMB 代码 Code
Kyodo Yushi	Multemp PS-2	锂基 (Lithium)	双脂 (Diester)	189	280	-50 ~ +110	低温脂 low-temperature grease	LY72
	Multemp SRL	锂基 (Lithium)	酯 (Ester)	190	250	-50 ~ +150	低噪音脂 low noise grease	LY121
	Multemp SB-M	双聚脲 (Diurine)	合成油 (Synthrtic oil)	260	260	-40 ~ +200	高温高速脂 high temperature high speed grease	LY551
	MultempET-K	双聚脲 (Diurine)	合成油 / 脂 (Synthetic ilGrease)	260	300	-40 ~ +200	高温高速交流发电机脂 High temperature high speed alternators grease	/
	RAREMAX SUPER N	聚脲 (Urea)	合成油 (Synthrtic oil)	253	251	-40 ~ +200	高温长寿命脂 high temperature longevity grease	/
	Multemp SRH	锂基 (Lithium)	酯 (Ester)	250	201	-40 ~ +150	低温脂 low-temperature grease	LY530
	NS Hilube (NS7)	锂基 (Lithium)	双酯 (Diester)	190	255	-40 ~ +130	常温脂 normal temperature grease	/
Exxon	Polyrex EM	双聚脲 (Diurine)	矿物 (Mineral)	260	288	-40 ~ +180	高温低噪音 high temperature low noise	/
	Beacon325	锂基 (Lithium)	双酯 (Diester)	193	290	-60 ~ +120	低温脂 low-temperature grease	LG20
	Andok B	钠基 (Natrium)	矿物 (Mineral)	≥ 260	280	-40 ~ +120	常温脂 normal temperature grease	LG38
Mobil oil	Mobil 28	膨润土 (Bentonite)	合成碳氢 (Syntheic hydrocarbon)	260	280	-60 ~ +180	高低温脂 high-low temperature	LY48
	Mobil 22	锂基 (Lithium)	双酯矿物 (Diester Mineral)	192	274	-50 ~ +140	低温脂 low-temperature grease	/
	FM222	复合铝 (Compound aluminum)		260	280	-20 ~ +120	食品级油脂 Food Grease	
Caltex	chevrom SRI-2	聚脲 (Urea)	矿物 (Mineral)	243	280	-30 ~ +150	高温脂 high temperature grease	LY75
Shell	Alvania RA	锂基 (Lithium)	矿物 (Mineral)	183	252	-25 ~ +120	常温脂 normal temperature grease	/
	Alvania EP2	锂基 (Lithium)	矿物 (Mineral)	185	276	-10 ~ +100	常温脂 normal temperature grease	/
	Alvania RLQ 2	锂基 (Lithium)	矿物 (Mineral)	195	266	-50 ~ +150	低噪音高速脂 low noise high speed grease	/
	Dolium R	锂基 (Lithium)	矿物 (Mineral)	238	281	-20 ~ +140	常温脂 normal temperature grease	/
Kluber	Asonic GLY32	锂基 (Lithium)	合成油 (Synthrtic oil)	190	265-295	-50 ~ +140	低温脂 low-temperature grease	/
	Asonic GHY72	聚脲 (Urea)	酯-矿物 (Ester Mineral)	250	250-280	-40 ~ +180	高温低噪音 high temperature low noise	/
	Asonic HQ72-102	聚脲 (Urea)	酯 (Ester)	240	250-280	-40 ~ +180	高温和低噪音脂 low-temperature greasehigh temperature and low noise grease	/
	Staburags NBU12	钡基 (Barium)	矿物 (Mineral)	220	270	-35 ~ +150	常温脂 normal temperature grease	/
	Isoflex NBU15	锂基 (Lithium)	双酯矿物 (Diester Mineral)	220	280	-30 ~ +130	常温脂 normal temperature grease	/
	Petamo GHY 133	聚脲 (Urea)	合成矿物油 (Synthetic Mineral oil)	240	250-280	-25 ~ +150	常温脂 normal temperature grease	/
	Petamo GHY443	聚脲 (Urea)	酯 (Ester)	250	250-280	-20 ~ +180	高温长寿命脂 high temperature longevity grease	/
	Kluberquite BQH72-102	聚脲 (Urea)	酯 (Ester)	250	250 ~ 280	-40 ~ +180	高温和低噪音脂 low-temperature greasehigh temperature and low noise grease	
	Barriertal L 55/2	聚四氟乙烯 (PTFE)	氟化油 (Fluorinated)		280	-40 ~ +260	高、低温脂 High-low temperature grease	

Vibration & Noise 振动和噪音

NBVO miniaure bearings feature low vibration and low noise. NBVO bearing for EMQ electric motor are available as requested.
NBVO 微小型轴承振动小噪音低。本公司专门生产符合 EMQ 电机质量要求的低噪音电机轴承，供用于订购。

Deep Groove Ball Bearings Vibration(Acceleration)-Specifications(dB)
深沟球轴承振动 (加速度) 技术条件 (dB) S0910 1500rpm

公称内径 d(mm)	单个轴承振动加速度级 (dB) (≤)																	
	直径系列 (0)						直径系列 (2)						直径系列 (3)					
	Z	Z1	Z2	Z3	Z4	Z5	Z	Z1	Z2	Z3	Z4	Z5	Z	Z1	Z2	Z3	Z4	Z5
3	33	30	28	25	24	22	34	31	29	26	24	22	37	36	33	31	27	23
4	33	30	28	25	24	22	34	31	29	26	24	22	37	36	33	31	27	23
5	34	31	28	25	24	22	35	32	29	26	24	22	39	37	35	33	28	24
6	34	32	29	26	24	22	35	32	29	26	24	22	39	37	35	33	28	24
7	36	33	30	27	25	22	36	34	31	27	25	22	40	38	36	34	30	26
8	36	33	30	27	25	22	36	34	31	27	25	22	40	38	36	34	30	26
9	38	34	30	28	25	23	39	35	32	28	26	24	41	39	37	35	31	28
10	38	34	30	28	26	24	40	37	33	28	26	24	46	44	40	37	32	28
12	38	34	30	28	26	24	41	38	34	30	27	25	47	45	40	37	32	28
15	43	39	34	31	29	26	43	39	35	32	29	26	48	46	42	38	33	29
17	44	39	35	32	30	26	44	40	36	33	31	27	49	47	42	38	33	29
20	44	40	36	33	31	27	45	41	37	34	32	28	50	48	43	39	34	30
22	44	40	36	33	31	27	45	41	37	34	32	28	50	48	43	39	34	30
25	46	44	41	37	33	29	47	46	42	39	35	31	49	48	43	40	36	32
28	47	45	42	38	34	30	48	47	43	40	36	32	50	49	44	41	37	33
30	47	45	42	38	34	30	48	47	43	40	36	32	50	49	44	41	37	33
32	48	46	43	39	35	32	49	48	44	41	37	34	51	50	45	42	38	35
35	49	47	44	40	36	33	50	49	45	42	38	35	53	51	46	43	39	35
40	51	49	45	41	37	34	52	51	46	43	39	36	55	53	48	44	40	37
45	53	51	47	44	41	38	54	52	48	45	42	39	57	55	50	46	43	40
50	55	52	48	46	43	40	56	53	49	47	44	41	59	56	52	48	45	42

Deep Groove Ball Bearings Vibration(Acceleration)-Specifications(μ m/s)

深沟球轴承振动(速度)技术条件(μ m/s) BVT 1800rpm

公称内径 d(mm)	V			V1			V2			V3			V4		
	低频	中频	高频	低频	中频	高频	低频	中频	高频	低频	中频	高频	低频	中频	高频
	L	M	H	L	M	H	L	M	H	L	M	H	L	M	H
3	80	44	44	60	35	32	48	26	22	31	16	15	28	10	10
4	80	44	44	60	35	32	48	26	22	31	16	15	28	10	10
5	110	72	60	74	48	40	58	36	30	35	21	18	32	11	11
6	110	72	60	74	48	40	58	36	30	35	21	18	32	11	11
7	130	96	80	92	66	54	72	48	40	44	28	24	38	12	12
8	130	96	80	92	66	54	72	48	40	44	28	24	38	12	12
9	130	96	80	92	66	54	72	48	40	44	28	24	38	12	12
10	160	120	100	120	80	70	90	60	50	55	35	30	45	14	15
12	160	120	100	120	80	70	90	60	50	55	35	30	45	14	15
15	210	150	120	150	100	85	110	78	60	65	46	35	52	18	18
17	210	150	120	150	100	85	110	78	60	65	46	35	52	25	25
20	260	190	150	180	125	100	130	100	75	80	60	45	60	25	25
22	260	190	150	180	125	100	130	100	75	80	60	45	60	30	32
25	260	190	150	180	125	100	130	100	75	80	60	45	60	30	32
28	260	190	150	180	125	100	130	100	75	80	60	45	60	35	40
30	300	240	190	200	150	130	150	120	100	90	75	60	70	35	40
32	300	240	190	200	150	130	150	120	100	90	75	60	70	35	40
35	300	240	190	200	150	130	150	120	100	90	75	60	70	42	45
40	360	300	260	240	180	160	180	150	130	110	90	80	82	50	50
45	360	300	260	240	180	160	180	150	130	110	90	80	82	60	60
50	420	320	320	280	200	200	210	160	160	125	100	100	95	70	70

Shield And Seal 防尘、密封

NBVO bearings can be supplied in various types, such as open, with single or Double shields(Z or 2Z), and with seals(RS or 2RS)Double-sealed(2RS)Double-shielded(ZZ)and bearings are supplied with grease. So, they can be used directly after being unpacked at temperature -40°C +150°C. Special grease and type can also be supplied, Please refer to lubricants and specifications of page 13

百沃轴承有开放式, 单面或双面带防尘盖(Z, 2Z)和带密封圈(RS, 2RS)双面带防尘盖或密封圈的轴承在出厂时已按要求填充了润滑脂, 这些轴承可直接启封使用。其工作温度为-40C~150C。当工作条件特殊时, 客户应在订货时附注加脂量及油脂牌号或其他要求。

Packing And Marking 包装与标志

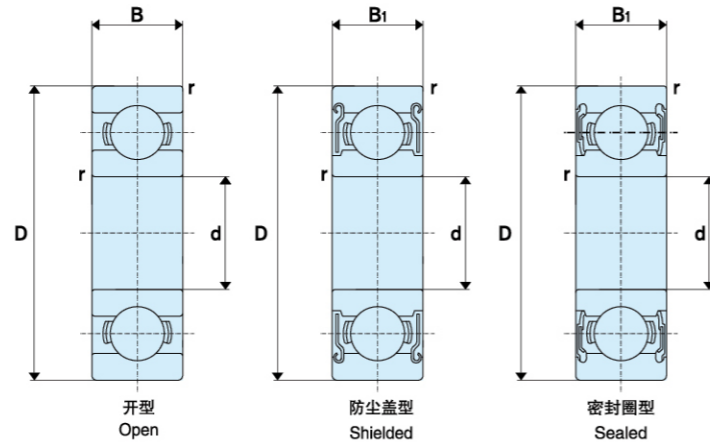
NBVO bearings can be delivered in plastic tubes placed in carton boxes, wrapped in anti-rust paper with no tubes directly in carton box, or in plastic bag packed in a single box. Packing type must be specified in the order. Required indications are marked on carton box, such as bearing type, quantity and weight.

百沃轴承是用塑料筒或用防锈纸卷包后装入纸箱, 也可单套装入塑料小袋后再装入小纸盒, 订货时可规定包装型式。轴承每箱包装外面有明显的标志, 表示轴承的数量、质量、日期、体积及轴承代号等, 以便客户贮存及分类。



Core Product
核心产品 >>

Metric Series 公制系列



Metric Series 公制系列

d	外形尺寸 Boundary dimensions (mm)				轴承代号 Bearing No.			额定负荷 Load rating (N)		极限转速 Limiting speeds(rpm)	
	D	B	B1	Rmix	开式 Open	防尘盖型 Shielded	密封圈型 Sealed	Cr	Cor	脂 Grease	油 Oil
2	5	1.5	2.3	0.08	682	682ZZ	-	169	50	85000	100000
	6	2.3	3	0.15	692	692ZZ	-	330	98	75000	90000
	6	2.5	2.5	0.15	MR62	MR62ZZ	-	330	98	75000	90000
	7	2.5	3	0.15	MR72	MR72	-	385	127	63000	75000
	7	2.8	3.5	0.15	602	602ZZ	-	385	127	63000	75000
3	6	2	2.5	0.1	MR63	MR63ZZ	-	208	74	71000	80000
	8	3	4	0.15	693	693ZZ	-	560	179	60000	67000
	9	2.5	4	0.15	MR93	MR93ZZ	-	570	187	56000	67000
	9	3	5	0.15	603	603ZZ	-	570	187	56000	67000
	10	4	4	0.15	623	623ZZ	623-2RS	630	218	50000	60000
	13	5	5	0.2	633	633ZZ	633-2RS	1300	485	40000	48000
4	7	2	2.5	0.1	MR74(674)	MR74ZZ(674ZZ)	-	310	115	60000	67000
	8	2	3	0.1	MR84	MR84ZZ	-	395	139	56000	67000
	9	2.5	4	0.1	684	684ZZ	684-2RS	640	225	53000	63000
	10	3	4	0.15	MR104	MR104ZZ	-	585	204	48000	56000
	11	4	4	0.15	694	694ZZ	694-2RS	960	345	48000	56000
	12	4	4	0.2	604	604ZZ	604-2RS	970	360	48000	56000
	13	5	5	0.2	624	624ZZ	624-2RS	1300	485	40000	48000
	16	5	5	0.3	634	634ZZ	634-2RS	1880	680	36000	43000

Metric Series 公制系列

d	外形尺寸 Boundary dimensions (mm)				轴承代号 Bearing No.			额定负荷 Load rating (N)		极限转速 Limiting speeds(rpm)	
	D	B	B1	Rmix	开式 Open	防尘盖型 Shielded	密封圈型 Sealed	Cr	Cor	脂 Grease	油 Oil
5	8	2	2.5	0.1	MR85(675)	MR85ZZ(675ZZ)	-	310	120	53000	63000
	9	2.5	3	0.15	MR95	MR95ZZ	-	430	168	50000	60000
	10	3	4	0.15	MR105	MR105ZZ	-	430	168	50000	60000
	11	3	5	0.15	685	685ZZ	-	715	281	45000	53000
	13	4	4	0.2	695	695ZZ	695-2RS	1080	430	43000	50000
	14	5	5	0.2	605	605ZZ	605-2RS	1090	440	40000	50000
	16	5	5	0.3	625	625ZZ	625-2RS	1730	670	36000	43000
	19	6	6	0.3	635	635ZZ	635-2RS	2340	885	32000	40000
6	10	2.5	3	0.1	MR106(676)	MR106ZZ(676ZZ)	-	495	218	45000	53000
	12	3	4	0.15	MR126	MR126ZZ	MR126-2RS	715	292	43000	50000
	13	3.5	5	0.15	686	686ZZ	686-2RS	1080	440	40000	50000
	15	5	5	0.2	696	696ZZ	696-2RS	1470	600	40000	45000
	17	6	6	0.3	606	606ZZ	606-2RS	1970	735	38000	45000
	19	6	6	0.3	626	626ZZ	626-2RS	2340	885	32000	40000
	22	7	7	0.3	636	636ZZ	636-2RS	3300	1370	30000	36000
7	11	2.5	3	0.1	MR117(677)	MR117ZZ(677ZZ)	-	455	201	43000	50000
	13	3	4	0.15	MR137	MR137ZZ	-	540	276	40000	48000
	14	3.5	5	0.15	687	687ZZ	687-2RS	1170	510	40000	45000
	17	5	5	0.3	697	697ZZ	697-2RS	1610	710	36000	43000
	19	6	6	0.3	607	607ZZ	607-2RS	2340	885	36000	43000
	22	7	7	0.3	627	627ZZ	627-2RS	3300	1370	30000	36000
	26	9	9	0.3	637	637ZZ	637-2RS	4560	1980	28000	48000
8	12	2.5	3.5	0.1	MR128(678)	MR128ZZ(678ZZ)	-	545	275	40000	45000
	14	3.5	4	0.15	MR148	MR148ZZ	MR148-2RS	820	385	38000	43000
	16	4	5	0.2	688	688ZZ	688-2RS	1605	715	36000	43000
	19	6	6	0.3	698	698ZZ	698-2RS	2240	910	36000	40000
	22	7	7	0.3	608	608ZZ	608-2RS	3300	1370	30000	36000
	24	8	8	0.3	628	628ZZ	628-2RS	3350	1430	28000	40000
	28	9	9	0.3	638	638ZZ	638-2RS	4550	1970	28000	42000

Metric Series 公制系列

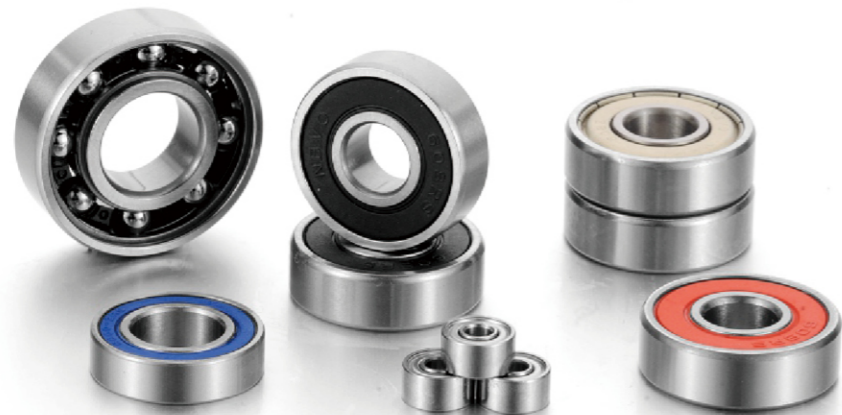
外形尺寸 Boundary dimensions (mm)					轴承代号 Bearing No.			额定负荷 Load rating (N)		极限转速 Limiting speeds(rpm)	
d	D	B	B1	Rmix	开式 Open	防尘盖型 Shielded	密封圈型 Sealed	Cr	Cor	脂 Grease	油 Oil
9	17	4	5	0.2	689	689ZZ	689-2RS	1330	665	36000	43000
	20	6	6	0.3	699	699ZZ	699-2RS	2850	1090	34000	38000
	24	7	7	0.3	609	609ZZ	609-2RS	3350	1430	32000	34000
	26	8	8	0.3	629	629ZZ	629-2RS	4550	1970	28000	30000
	30	10	10	0.6	639	639ZZ	639-2RS	4650	2070	24000	30000
10	19	5	5	0.3	6800	6800ZZ	6800-2RS	1600	755	34000	40000
	22	6	6	0.3	6900	6900ZZ	6900-2RS	2700	1270	32000	38000
	26	8	8	0.3	6000	6000ZZ	6000-2RS	4550	1970	22000	36000
	30	9	9	0.6	6200	6200ZZ	6200-2RS	5100	2390	24000	30000
	35	11	11	0.6	6300	6300ZZ	6300-2RS	7650	3470	22000	26000
12	21	5	5	0.3	6801	6801ZZ	6801-2RS	1920	1040	32000	38000
	24	6	6	0.3	6901	6901ZZ	6901-2RS	2890	1460	30000	36000
	28	7	7	0.3	16001	16001ZZ	16001-2RS	5100	2370	28000	32000
	28	8	8	0.3	6001	6001ZZ	6001-2RS	5100	2370	28000	32000
	32	10	10	0.6	6201	6201ZZ	6201-2RS	6800	3050	22000	28000
15	37	12	12	1.0	6301	6301ZZ	6301-2RS	9700	4200	20000	24000
	24	5	5	0.3	6802	6802ZZ	6802-2RS	2070	1260	28000	34000
	28	7	7	0.3	6902	6902ZZ	6902-2RS	4350	2260	26000	30000
	32	8	8	0.3	16002	16002ZZ	16002-2RS	5600	2830	24000	28000
	32	9	9	0.3	6002	6002ZZ	6002-2RS	5600	2830	24000	28000
17	35	11	11	0.6	6202	6202ZZ	6202-2RS	7650	3750	20000	24000
	42	13	13	1.0	6302	6302ZZ	6302-2RS	11400	5450	17000	20000
	26	5	5	0.3	6803	6803ZZ	6803-2RS	2630	1570	26000	30000
	30	7	7	0.3	6903	6903ZZ	6903-2RS	4600	2550	24000	28000
	35	8	8	0.3	16003	16003ZZ	16003-2RS	6000	3250	22000	26000
20	35	10	10	0.3	6003	6003ZZ	6003-2RS	6000	3250	22000	26000
	40	12	12	0.6	6203	6203ZZ	6203-2RS	9550	4800	17000	20000
	47	14	14	1.0	6303	6303ZZ	6303-2RS	13600	6650	15000	18000
	32	7	7	0.3	6804	6804ZZ	6804-2RS	4000	2470	22000	26000
	37	9	9	0.3	6904	6904ZZ	6904-2RS	6400	3700	19000	22000
20	42	8	8	0.3	16004	16004ZZ	16004-2RS	8400	4500	18000	20000
	42	12	12	0.3	6004	6004ZZ	6004-2RS	9400	5000	18000	20000
	47	14	14	1.0	6204	6204ZZ	6204-2RS	12800	6600	15000	18000
	52	15	15	1.1	6304	6304ZZ	6304-2RS	15900	7900	14000	17000

Metric Series 公制系列

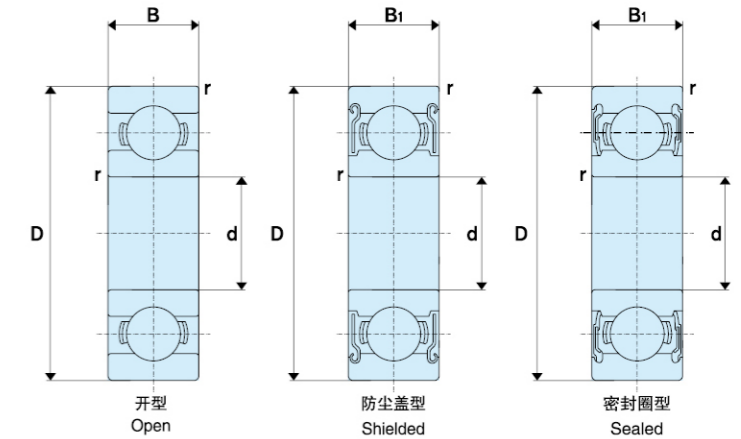
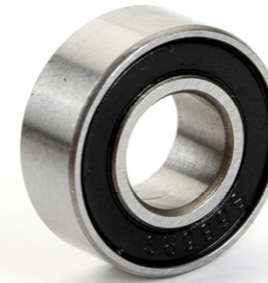
外形尺寸 Boundary dimensions (mm)					轴承代号 Bearing No.			额定负荷 Load rating (N)		极限转速 Limiting speeds(rpm)	
d	D	B	B1	Rmix	开式 Open	防尘盖型 Shielded	密封圈型 Sealed	Cr	Cor	脂 Grease	油 Oil
22	44	12	12	0.6	60/22	60/22-ZZ	60/22-2RS	9400	5050	17000	20000
	50	14	14	1.0	62/22	62/22-ZZ	62/22-2RS	12900	6800	14000	16000
	56	16	16	1.0	63/22	63/22-ZZ	63/22-2RS	20700	10430	13000	16000
25	37	7	7	0.3	6805	6805ZZ	6805-2RS	18000	10000	4300	2950
	42	9	9	0.3	6905	6905ZZ	6905-2RS	7000	4550	16000	19000
	47	8	8	0.3	16005	16005-ZZ	16005-2RS	10100	5850	15000	18000
	47	12	12	0.6	6005	6005ZZ	6005-2RS	10100	5850	15000	18000
	52	15	15	1.0	6205	6205ZZ	6205-2RS	14000	7850	13000	15000
28	62	17	17	1.1	6305	6305ZZ	6305-2RS	20600	11200	11000	13000
	52	12	12	0.6	60/28	60/28-ZZ	60/28-2RS	12500	7400	14000	16000
	58	16	16	1.0	62/28	62/28-ZZ	62/28-2RS	16600	9500	12000	14000
	68	18	18	1.1	63/28	63/28-ZZ	63/28-2RS	26700	14000	10000	13000
30	42	7	7	0.3	6806	6806ZZ	6806-2RS	4500	3450	15000	18000
	47	9	9	0.3	6906	6906ZZ	6906-2RS	7250	5000	14000	17000
	55	9	9	0.3	16006	16006ZZ	16006-2RS	13200	8300	13000	15000
	55	13	13	1.0	6006	6006ZZ	6006-2RS	13200	8300	13000	15000
	62	16	16	1.0	6206	6206ZZ	6206-2RS	19500	11300	11000	13000
35	72	19	19	1.1	6306	6306ZZ	6306-2RS	26700	15000	6500	12000
	47	7	7	0.3	6807	6807ZZ	6807-2RS	4750	2900	13000	16000
	55	10	10	0.6	6907	6907ZZ	6907-2RS	10600	7250	12000	15000
	62	9	9	0.3	16007	16007ZZ	16007-2RS	11700	8200	11000	13000
	62	14	14	1.0	6007	6007ZZ	6007-2RS	16000	10300	11000	13000
40	72	17	17	1.1	6207	6207ZZ	6207-2RS	25700	15300	9500	11000
	80	21	21	1.5	6307	6307ZZ	6307-2RS	33500	19200	8500	10000
	52	7	7	0.3	6808	6808ZZ	6808-2RS	4900	4350	12000	14000
	62	12	12	0.6	6908	6908ZZ	6908-2RS	13700	10000	11000	13000
	68	9	9	0.3	16008	16008ZZ	16008-2RS	12600	9650	10000	12000
40	68	15	15	1.0	6008	6008ZZ	6008-2RS	16800	11500	10000	12000
	80	18	18	1.1	6208	6208ZZ	6208-2RS	29100	17800	8500	10000
	90	23	23	1.5	6308	6308ZZ	6308-2RS	40500	24000	7500	9000

Metric Series 公制系列

外形尺寸 Boundary dimensions (mm)					轴承代号 Bearing No.			额定负荷 Load rating (N)		极限转速 Limiting speeds(rpm)	
d	D	B	B1	Rmix	开式 Open	防尘盖型 Shielded	密封圈型 Sealed	Cr	Cor	脂 Grease	油 Oil
45	58	7	7	0.3	6809	6809ZZ	6809-2RS	5350	5250	11000	13000
	68	12	12	0.6	6909	6909ZZ	6909-2RS	14100	10900	9500	12000
	75	10	10	0.6	16009	16009ZZ	16009-2RS	14900	11400	9000	11000
	75	16	16	1.0	6009	6009ZZ	6009-2RS	20900	15200	9000	11000
	85	19	19	1.1	6209	6209ZZ	6209-2RS	31500	20400	7500	9000
	100	25	25	1.5	6309	6309ZZ	6309-2RS	53000	32000	6700	8000
50	65	7	7	0.3	6810	6810ZZ	6810-2RS	6400	6200	9500	11000
	72	12	12	0.6	6910	6910ZZ	6910-2RS	14500	11700	9000	11000
	80	10	10	0.6	16010	16010ZZ	16010-2RS	15400	12400	8500	10000
	80	16	16	1.0	6010	6010ZZ	6010-2RS	21800	16600	8500	10000
	90	20	20	1.1	6210	6210ZZ	6210-2RS	35000	23200	7100	8500
	110	27	27	2.0	6310	6310ZZ	6310-2RS	62000	38500	6000	7500
55	72	9	9	0.3	6811	6811ZZ	6811-2RS	8800	8500	8500	10000
	80	13	13	1.0	6911	6911ZZ	6911-2RS	16000	13300	8000	9500
	90	11	11	0.6	16011	16011ZZ	16011-2RS	19400	16300	7500	9000
	90	18	18	1.1	6011	6011ZZ	6011-2RS	28300	21200	7500	9000
	100	21	21	1.5	6211	6211ZZ	6211-2RS	43500	29300	6300	7500
	120	29	29	2.0	6311	6311ZZ	6311-2RS	71500	44500	5600	6700



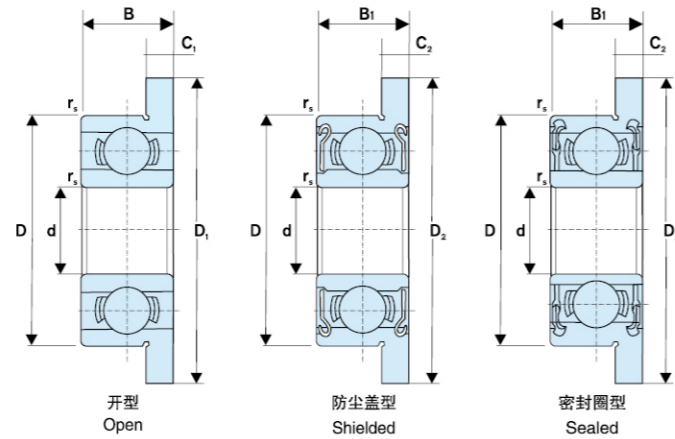
Inch Series 英制系列



Inch Series 英制系列

外形尺寸 Boundary dimensions (mm)					轴承代号 Bearing No.			额定负荷 Load rating (N)		极限转速 Limiting speeds(rpm)	
d	D	B	B1	Rmix	开式 Open	防尘盖型 Shielded	密封圈型 Sealed	Cr	Cor	脂 Grease	油 Oil
3.175	6.35	2.380	2.779	0.1	R144	R144ZZ	—	283	95	67000	80000
	7.938	2.779	3.571	0.1	R2-5	R2-5ZZ	—	560	179	60000	67000
	9.525	2.779	3.571	0.15	R2-6	R2-6ZZ	—	640	225	53000	63000
	9.525	3.967	3.967	0.3	R2	R2ZZ	—	630	218	56000	67000
	12.7	4.366	4.366	0.3	R2A	R2AZZ	—	640	225	53000	63000
3.967	7.938	2.779	3.175	0.1	R155	R155ZZ	—	360	149	53000	63000
4.762	7.938	2.779	3.175	0.1	R156	R156ZZ	—	360	149	53000	63000
	9.525	3.175	3.175	0.1	R166	R166ZZ	—	710	270	50000	60000
	12.7	3.967	4.978	0.3	R3	R3ZZ	—	1300	485	43000	53000
	15.875	4.978	4.978	0.3	R3A	R3AZZ	—	1480	615	38000	45000
6.35	9.525	3.175	3.175	0.1	R168	R168ZZ	—	420	204	48000	56000
	12.7	3.175	4.762	0.15	R188	R188ZZ	—	1080	440	40000	50000
	15.875	4.978	4.978	0.3	R4	R4ZZ	R4-2RS	1610	660	38000	45000
7.938	12.7	3.967	3.967	0.15	R1810	R1810ZZ	—	540	276	40000	48000
9.525	22.225	5.558	7.142	0.4	R6	R6ZZ	R6-2RS	3350	1410	32000	38000
12.7	28.575	6.35	7.938	0.4	R8	R8ZZ	R8-2RS	5115	2415	26000	32000
15.875	34.925	7.142	8.733	0.8	R10	R10ZZ	R10-2RS	6000	3250	22000	26000

Flange Series 法兰系列



Flange Series 法兰系列

d	外形尺寸 Boundary dimensions (mm)								轴承代号 Bearing No.			额定负荷 Load rating (N)		极限转速 Limiting speeds (rpm)	
	D	B	B1	D1	D2	C1	C2	rsmix	开式 Open	防尘盖型 Shielded	密封圈型 Sealed	Cr	Cor	脂 Grease	油 Oil
3	8	3	4	9.5	9.5	0.7	0.9	0.1	F693	F693ZZ	-	560	179	60000	67000
	9	2.5	4	10.2	10.6	0.6	0.8	0.15	MF93	MF93ZZ	-	570	187	56000	67000
	9	3	5	10.5	10.5	0.7	1.0	0.15	F603	F603ZZ	-	570	187	56000	67000
	10	4	4	11.5	11.5	1.0	1.0	0.15	F623	F623ZZ	F623-2RS	630	218	50000	60000
	13	5	5	15	15	1.0	1.0	0.2	F633	F633ZZ	F633-2RS	1300	485	36000	43000
4	7	2	2.5	8.2	8.2	0.6	0.6	0.1	MF74	MF74ZZ	-	310	115	60000	67000
	8	2	3	9.2	9.2	0.6	0.6	0.1	MF84	MF84ZZ	-	395	139	56000	67000
	9	2.5	4	10.3	10.3	0.6	1.0	0.1	F684	F684ZZ	F684-2RS	640	225	53000	63000
	10	3	4	11.2	11.6	0.6	0.8	0.15	MF104	MF104ZZ	-	710	270	50000	60000
	11	4	4	12.5	12.5	1.0	1.0	0.15	F694	F694ZZ	F694-2RS	960	345	48000	56000
	12	4	4	13.5	13.5	1.0	1.0	0.2	F604	F604ZZ	F604-2RS	960	345	48000	56000
	13	5	5	15	15	1.0	1.0	0.2	F624	F624ZZ	F624-2RS	1300	485	40000	48000
	16	5	5	18	18	1.0	1.0	0.3	F634	F634ZZ	F634-2RS	1730	670	36000	43000
5	8	2	2.5	9.2	9.2	0.6	0.6	0.1	MF85	MF85ZZ	-	310	120	53000	63000
	9	2.5	3	10.2	10.2	0.6	0.6	0.15	MF95	MF95ZZ	-	430	168	50000	60000
	10	3	4	11.2	11.6	0.6	0.8	0.15	MF105	MF105ZZ	-	430	168	50000	60000
	11	3	5	12.5	12.5	0.8	1.0	0.15	F685	F685ZZ	-	715	281	45000	53000
	13	4	4	15	15	1.0	1.0	0.2	F695	F695ZZ	F695-2RS	1080	430	43000	50000
	14	5	5	16	16	1.0	1.0	0.2	F605	F605ZZ	F605-2RS	1330	505	40000	50000
	16	5	5	18	18	1.0	1.0	0.3	F625	F625ZZ	F625-2RS	1730	670	36000	43000
	19	6	6	22	22	1.5	1.5	0.3	F635	F635ZZ	F635-2RS	2340	885	32000	40000

Flange Series 法兰系列

d	外形尺寸 Boundary dimensions (mm)								轴承代号 Bearing No.			额定负荷 Load rating (N)		极限转速 Limiting speeds (rpm)	
	D	B	B1	D1	D2	C1	C2	rsmix	开式 Open	防尘盖型 Shielded	密封圈型 Sealed	Cr	Cor	脂 Grease	油 Oil
6	10	2.5	3	11.2	11.2	0.6	0.6	0.1	MF106	MF106ZZ	-	495	218	45000	53000
	12	3	4	13.2	13.6	0.6	0.8	0.15	MF126	MF126ZZ	MF126-2RS	715	292	43000	50000
	13	3.5	5	15	15	1.0	1.1	0.15	F686	F686ZZ	F686-2RS	1080	440	40000	50000
	15	5	5	17	17	1.2	1.2	0.2	F696	F696ZZ	F696-2RS	1730	670	40000	45000
	17	6	6	19	19	1.2	1.2	0.3	F606	F606ZZ	F606-2RS	2260	835	38000	45000
	19	6	6	22	22	1.5	1.5	0.3	F626	F626ZZ	F626-2RS	2340	885	32000	40000
	22	7	7	25	25	1.5	1.5	0.3	F636	F636ZZ	F636-2RS	3300	1370	30000	36000
7	11	2.5	3	12.2	12.2	0.6	0.6	0.1	MF117	MF117ZZ	-	455	201	43000	50000
	13	3	4	14.2	14.6	0.6	0.8	0.15	MF137	MF137ZZ	-	540	276	40000	48000
	14	3.5	5	16	16	1.0	1.1	0.15	F687	F687ZZ	F687-2RS	1170	510	40000	45000
	17	5	5	19	19	1.2	1.2	0.3	F697	F697ZZ	F697-2RS	1610	715	36000	43000
	19	6	6	22	22	1.5	1.5	0.3	F607	F607ZZ	F607-2RS	2340	885	36000	43000
	22	7	7	25	25	1.5	1.5	0.3	F627	F627ZZ	F627-2RS	3300	1370	30000	36000
	26	9	9	29	29	2.0	2.0	0.3	F637	F637ZZ	F637-2RS	4560	1980	28000	48000
8	12	2.5	3.5	13.2	13.6	0.6	0.8	0.1	MF128	MF128ZZ	-	545	275	40000	48000
	14	3.5	4	15.6	15.6	0.8	0.8	0.15	MF148	MF148ZZ	MF148-2RS	820	385	38000	45000
	16	4	5	18	18	1.0	1.1	0.2	F688	F688ZZ	F688-2RS	1610	710	36000	43000
	19	6	6	22	22	1.5	1.5	0.3	F698	F698ZZ	F698-2RS	2240	910	36000	43000
	22	7	7	25	25	1.5	1.5	0.3	F608	F608ZZ	F608-2RS	3300	1370	34000	40000
	24	8	8	26	26	2.0	2.0	0.3	F628	F628ZZ	F628-2RS	3350	1430	28000	34000
	28	9	9	30.25	30.25	2.25	2.25	0.3	F638	F638ZZ	F638-2RS	4550	1970	28000	34000
9	17	4	5	19	19	1.0	1.1	0.2	F689	F689ZZ	F689-2RS	1330	665	36000	43000
	20	6	6	23	23	1.5	1.5	0.3	F699	F699ZZ	F699-2RS	2850	1090	34000	40000
	24	7	7	27	27	1.5	1.5	0.3	F609	F609ZZ	F609-2RS	3350	1430	32000	38000
	26	8	8	28	28	2.0	2.0	0.3	F629	F629ZZ	F629-2RS	4550	1970	28000	34000

Flange Series 法兰系列

外形尺寸 Boundary dimensions (mm)									轴承代号 Bearing No.			额定负荷 Load rating (N)		极限转速 Limiting speeds (rpm)	
d	D	B	B1	D1	D2	C1	C2	rsmix	开式 Open	防尘盖型 Shielded	密封圈型 Sealed	Cr	Cor	脂 Grease	油 Oil
10	19	5	5	21	21	1.0	1.0	0.3	F6800	F6800ZZ	F6800-2RS	1720	840	34000	40000
	22	6	6	25	25	1.5	1.5	0.3	F6900	F6900ZZ	F6900-2RS	2700	1270	32000	38000
	26	8	8	28	28	2.0	2.0	0.3	F6000	F6000ZZ	F6000-2RS	4550	1970	30000	36000
12	21	5	5	23	23	1.1	1.1	0.3	F6801	F6801ZZ	F6801-2RS	1920	1040	32000	20000
	24	6	6	26.5	26.5	1.5	1.5	0.3	F6901	F6901ZZ	F6901-2RS	2890	1460	30000	38000
15	24	5	5	26	26	1.1	1.1	0.3	F6802	F6802ZZ	F6802-2RS	2070	1260	28000	36000
	28	7	7	30.5	30.5	1.5	1.5	0.3	F6902	F6902ZZ	F6902-2RS	4350	2260	26000	30000



百沃智造
创新未来



Innovate The Future

Manufactured By NBVO